

**KIMOFIX**<sup>®</sup>  
fixing system solutions

**Web**  
[www.kimofix.com](http://www.kimofix.com)

**Email**  
[info@kimofix.com](mailto:info@kimofix.com)

**Office Add**  
1001-1002, Building A, AUX-Orient Center, 518Xinmei Rd, Ningbo, China

**Factory Add**  
No.27. Zhushan Industry Zone. Yuyao City. Zhejiang Pro. CN

General Fixings  
Feel the power of KIMOFIX

## KGF-WA001 Extruded Wall Plugs

### Applications:

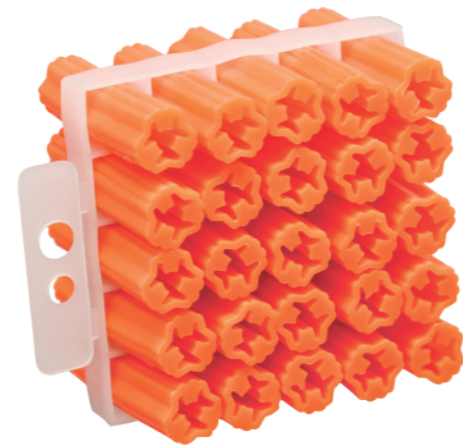
Kimoplug™ Extruded Wall Plugs provide a highly cost effective fastening solution for a variety of light duty fixing applications in solid brick, concrete and masonry.

### Features:

Though expansion and fastening

Three external fins prevents rotation

Plug provides additional corrosion resistance to screw



### Size(mm)

<b>5x</b> white	$\frac{25}{38}$	<b>6x</b> red	$\frac{25}{38}$	<b>7x</b> green	$\frac{25}{38}$ $\frac{50}{50}$	<b>8x</b> blue	$\frac{25}{38}$ $\frac{50}{50}$
--------------------	-----------------	------------------	-----------------	--------------------	------------------------------------	-------------------	------------------------------------

### Size(mm)

<b>10x</b> orange	$\frac{38}{50}$
----------------------	-----------------

## KGF-WA002 Extruded Wall Plugs



### Anchor Length(mm)

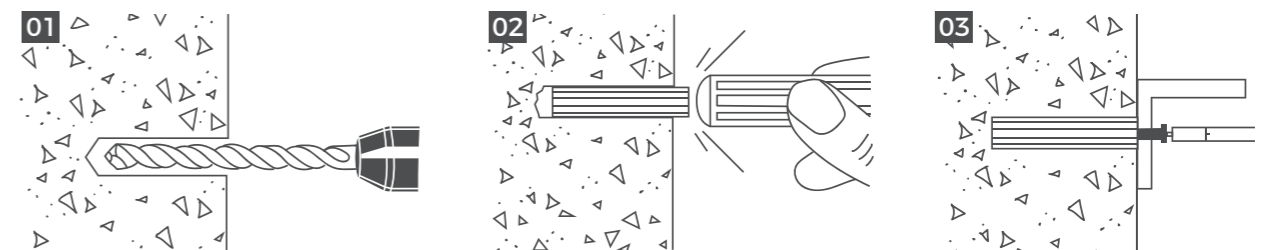
### Color

### Pack Qty

5.5	yellow	5m/circle
	red	
	green	
	blue	

### Installation Guidelines

1. Drill hole into the base material to the depth of embedment required. The tolerances of the drill bit used should meet the requirements of ANSI Standard B212.15.
2. Blow the hole clean of dust and other material. Insert the anchor into the hole until it is flush with the surface of the base material.
3. Position the fixture insert the proper size screw through the fixture into the top of the anchor and tighten. Be sure screw thread fully engages the anchor body.

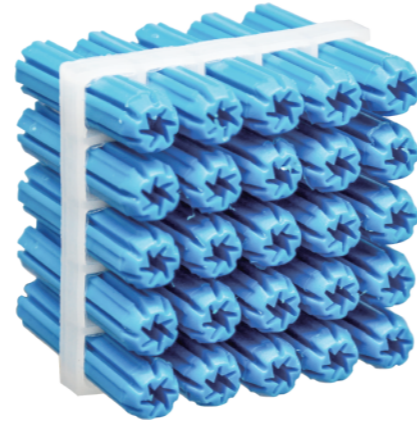


## KGF-WA003 Extruded Wall Plugs Chamfered End

### Applications:

Kimoplug™ Star Wall Plugs are traditional expansion plugs with chamfered end that are suitable for light duty anchoring in concrete, stone, solid brick and block.

The plug expands its full length and has a tapered end for effortless fitting within the pre-drilled hole. The plug provides an additional level of corrosion resistance to screw.



### Features:

Economic fixture to solid base materials

Fluted surface prevents rotation

Tapered end for easy fitting in the pre-drilled hole

Plug is designed to expand its entire length

### Size(mm)

4x		5x		6x		7x	
yellow	25	white	25	red	25	green	25
			35		30		30
					35		35
					38		38
					50		50

### Size(mm)

8x		10x		12x	
blue	25	orange	35	grey	25
	35		38		30
	38		50		35
	50		63		50

## KGF-WA004 Extruded Wall Plugs



### Anchor Length(mm)

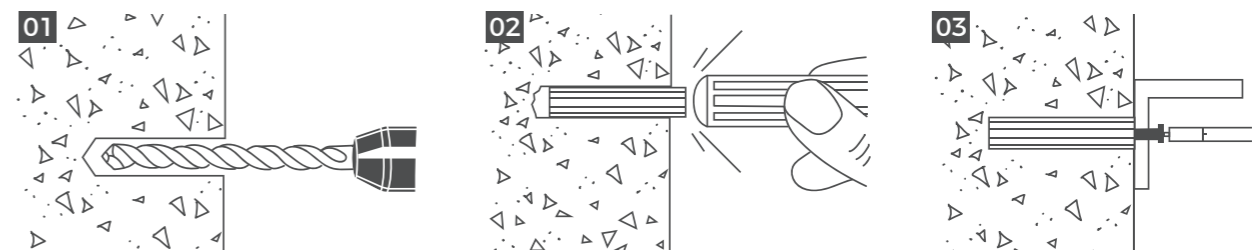
### Color

### Pack Qty

5	white	5m/circle
6	red	
7	green	
8	blue	

### Installation Guidelines

1. Drill a hole to the appropriate diameter and depth. Remove the debris with a hand pump, compressed air, or vacuum.
2. Insert the plug/spaghetti into the hole.
3. Screw the screw through the fixture into the plug/spaghetti until fixture is firm against the substrate.



## KGF-WA005 Multi-purpose Wall Plug without Rim

### Applications:

Fish Plastic Anchor is ideal for fastening building materials, including thin substrates. It withstands extreme temperatures (-40°C - +80°C), resists rust corrosion, environmental aging, and chemical effects. Additionally, the integrated gear-shaped ribs prevent slippage within drilled holes under mechanical stress.



### Features:

- Excellent electrical insulation
- High tensile strength
- Pressure resistance
- Hidden installation
- Superior grip in hard substrates (concrete, stone).

#### Size(mm)

4x <u>20</u>	5x <u>25</u>	6x $\frac{30}{60}$	7x <u>35</u>	8x <u>40</u>
--------------	--------------	--------------------	--------------	--------------

#### Size(mm)

10x <u>50</u>	12x <u>60</u>	14x <u>75</u>	16x <u>80</u>
---------------	---------------	---------------	---------------

## KGF-WA006 Multi-purpose Wall Plug with Rim

### Applications:

Fish Plastic Anchor is ideal for fastening building materials, including thin substrates. It withstands extreme temperatures (-40 °C - +80°C), resists rust corrosion, environmental aging, and chemical effects. The flanged design uses a root collar to "lock" against the wall surface, limiting embedment depth and dispersing pressure.



### Features:

- Excellent electrical insulation
- High tensile strength
- Pressure resistance
- Ideal for soft substrates (e.g., drywall)

#### Size(mm)

4x <u>20</u>	5x $\frac{25}{40}$	6x $\frac{30}{40}$ <u>60</u>	7x <u>35</u>	8x <u>40</u>
--------------	--------------------	---------------------------------	--------------	--------------

#### Size(mm)

10x <u>50</u>	12x <u>60</u>	14x <u>75</u>	16x <u>80</u>
---------------	---------------	---------------	---------------

## KGF-WA007 Fish Type Plastic Anchors

### Applications:

Fish Plastic Anchor is ideal for fastening building materials, including thin substrates. It withstands extreme temperatures (-40°C - +80°C), resists rust corrosion, environmental aging, and chemical effects. Four radially protruding barbed wings along the tube body, expanding into an "X" shape upon insertion to maximize wall contact and friction.



### Features:

- Excellent electrical insulation
- High tensile strength
- Pressure resistance
- Hidden installation
- Superior grip in hard substrates (concrete, stone).

#### Size(mm)

5x 25	6x 30	7x 35	8x 40	10x 50
-------	-------	-------	-------	--------

#### Size(mm)

12x 60	14x 75
--------	--------

## KGF-WA008 Fish Type Plastic Anchors

### Applications:

Fish Plastic Anchor is ideal for fastening building materials, including thin substrates. It withstands extreme temperatures (-40°C - +80°C), resists rust corrosion, environmental aging, and chemical effects. Four radially protruding barbed wings along the tube body, expanding into an "X" shape upon insertion to maximize wall contact and friction.



### Features:

- Excellent electrical insulation
- High tensile strength
- Pressure resistance
- Ideal for soft substrates (e.g., drywall)

#### Size(mm)

5x 25	6x 30	7x 35	8x 40	10x 50
-------	-------	-------	-------	--------

#### Size(mm)

12x 60	14x 75
--------	--------

## KGF-WA009 Special Fish Type Plastic Anchors

### Applications:

Fish Plastic Anchor is ideal for fastening building materials, including thin substrates. It withstands extreme temperatures (-40°C - +80°C), resists rust corrosion, environmental aging, and chemical effects. Four radially protruding barbed wings along the tube body, expanding into an "X" shape upon insertion to maximize wall contact and friction.



### Features:

- Excellent electrical insulation
- High tensile strength
- Pressure resistance
- Expandable Wings

#### Size(mm)

**6x** 30      **8x** 40      **10x** 50      **12x** 60      **14x** 70

#### Size(mm)

**16x** 80

## KGF-WA010 Special Fish Type Plastic Anchors

### Applications:

Fish Plastic Anchor is ideal for fastening building materials, including thin substrates. It withstands extreme temperatures (-40°C - +80°C), resists rust corrosion, environmental aging, and chemical effects. Four radially protruding barbed wings along the tube body, expanding into an "X" shape upon insertion to maximize wall contact and friction.



### Features:

- Excellent electrical insulation
- High tensile strength
- Pressure resistance
- Dual Barb Rows

#### Size(mm)

**6x** 30      **8x** 40      **10x** 50      **12x** 60      **14x** 70

#### Size(mm)

**16x** 80

## KGF-WA011 Special Fish Type Plastic Anchors

### Applications:

Fish Plastic Anchor is ideal for fastening building materials, including thin substrates. It withstands extreme temperatures (-40°C- +80°C), resists rust corrosion, environmental aging, and chemical effects. Light brown monolithic plastic body with central longitudinal groove (~1.5mm wide) and dense circumferential barb rings



### Features:

- High load capacities in concrete and solid brick
- Excellent electrical insulation
- High tensile strength
- Pressure resistance

### Size(mm)

<b>6x</b> 30	<b>8x</b> 40	<b>10x</b> 50	<b>12x</b> 60	<b>14x</b> 70
--------------	--------------	---------------	---------------	---------------

## KGF-WA012 Special Fish Type Plastic Anchors

### Applications:

Fish Plastic Anchor is ideal for fastening building materials, including thin substrates. It withstands extreme temperatures (-40°C- +80°C), resists rust corrosion, environmental aging, and chemical effects.



### Features:

- Excellent electrical insulation
- High tensile strength
- Pressure resistance

### Anchor Size(mm)

### Drill Size(mm)

### Screw Size(mm)

6X33

6

3.5-5

## KGF-WA013 Special Fish Type Plastic Anchors

### Applications:

Fish Plastic Anchor is ideal for fastening building materials, including thin substrates. It withstands extreme temperatures (-40 °C - + 80 °C), resists rust corrosion, environmental aging, and chemical effects. Additionally, its polymer composition provides excellent electrical insulation, high tensile strength, and pressure resistance. The integrated gear-shaped ribs prevent slippage within drilled holes under mechanical stress.



### Features:

- Excellent electrical insulation
- High tensile strength
- Pressure resistance

Anchor Size(mm)
10X50

## KGF-WA014 Special Fish Type Plastic Anchors

### Applications:

Fish Plastic Anchor is ideal for fastening building materials, including thin substrates. It withstands extreme temperatures (-40 °C - + 80 °C), resists rust corrosion, environmental aging, and chemical effects. Additionally, its polymer composition provides excellent electrical insulation, high tensile strength, and pressure resistance. The integrated gear-shaped ribs prevent slippage within drilled holes under mechanical stress.



### Features:

- Anti-rotation barbs that prevent spinning in the hole.

Anchor Size(mm)	Drill Size(mm)	Screw Size(mm)
8X28	8	M4

## KGF-WA015 Special Fish Type Plastic Anchors

### Applications:

Fish Plastic Anchor is ideal for fastening building materials, including thin substrates. It withstands extreme temperatures (-40 °C - + 80 °C), resists rust corrosion, environmental aging, and chemical effects. Additionally, its polymer composition provides excellent electrical insulation, high tensile strength, and pressure resistance. The integrated gear-shaped ribs prevent slippage within drilled holes under mechanical stress.

### Features:

- Economic fixture to solid base materials
- Fluted surface prevents rotation
- Tapered end for easy fitting in the pre-drilled hole
- Plug is designed to expand its entire length



## KGF-WA016 Universal Wall Plug

### Applications:

Our plastic anchors for drywall are suitable for installing light-duty items like photo frames, coat racks, from turning in the hole during installation split between the anchor helps ensure expansion

### Features:

- Monolithic cylindrical
- Axial anti-slip ribs for torque transmission
- Full-length rectangular slot



Anchor Size(mm)	Drill Size(mm)
6X30	6

Anchor Size(mm)	Drill Size(mm)	Screw Size(mm)
12X60	12	8-10

## KGF-WA017 Universal Wall Plug

### Applications:

Our plastic anchors for drywall are suitable for installing light-duty items like photo frames, coat racks, from turning in the hole during installation split between the anchor helps ensure expansion



### Features:

- Monolithic cylindrical
- Axial anti-slip ribs for torque transmission
- Full-length rectangular slot

Anchor Size(mm)	Drill Size(mm)
5X25	5
6X30	6
8X40	8
10X50	10
12X60	12
14X70	14

## KGF-WA018 Universal Wall Plug

### Applications:

A versatile and reliable fastening solution designed for a wide range of applications. This high-quality dowel is crafted from durable materials to ensure long-lasting performance and stability.



### Features:

- Suitable for hollow or solid base materials

Anchor Size(mm)	Drill Size(mm)	Screw Size(mm)
6X36	6	3
8X50	8	4
10X60	10	5

## KGF-WA019 Universal Wall Plug

### Applications:

Plastic knotted anchors are ideal for light to medium duty and are suitable for hollow building materials. In this unique design, the expansion tube firmware "knotted" inside the wall material when the screw was tightened. The durable edge of the expansion tube prevents the plug from sliding into the hollow part of the wall to ensure a firm fit.



### Features:

High expansion coefficient  
Impact resistance

Anchor Size(mm)	Drill Size(mm)	Screw Size(mm)
5X30	5	3-3.5
6X36	6	3.5-4
6X60	6	3.5-4
8X50	8	4-5
10X60	10	5-6

## KGF-WA020 Universal Wall Plug

### Applications:

Universal Wall Plug is suitable for all the lightweight fixings in solid brick, concrete and sheet materials. From turning in the hole during installation split between the anchor helps ensure expansion on 2 opposing sides.



### Features:

High expansion coefficient  
Impact resistance

Anchor Size(mm)	Drill Size(mm)	Screw Size(mm)
5X31	5	3
6X36	6	4
8X50	8	5
10X60	10	6
12X70	12	8
14X75	14	10

## KGF-WA021 Universal Wall Plug

### Applications:

Universal Wall Plug is suitable for all the lightweight fixings in solid brick, concrete and sheet materials. From turning in the hole during installation split between the anchor helps ensure expansion on 2 opposing sides.



### Features:

High expansion coefficient  
Impact resistance

Anchor Size(mm)	Drill Size(mm)	Screw Size(mm)
5X31	5	3
6X36	6	4
6X51	6	4
8X50	8	5
10X60	10	6
12X70	12	8
14X75	14	10

## KGF-WA022 Wing Conical Anchor

### Applications:

Applied for drywall, high-hole brick, concrete, gypsum board, sand brick, plaster or other wall materials.



### Features:

High quality 100% virgin plastic  
Highly resistant to rust

Anchor Size(inch)	Drill Size(inch)	Plug Length(mm)	Screw Size(mm)
3/16 X 7/8	3/16	22	6-8
3/16 X 1	3/16	25	8-10
1/4 X 1-1/4	1/4	30	10-12
5/16 X 1-1/2	5/16	38	14-16

## KGF-WA023 Conical Plastic Anchors

### Applications:

The plastic conical anchor is designed for use with lightweight fixtures. It can be used in concrete, block, brick and wallboard. It is injection molded from an engineered plastic and plastic and is designed to be used in conjunction with a sheet metal or wood screw.



### Features:

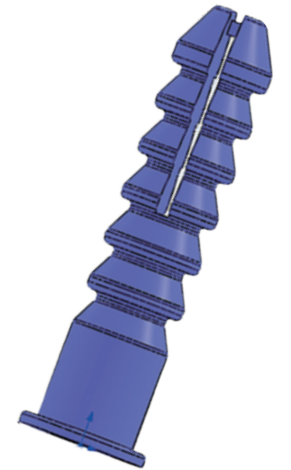
Horizontal fins prevent anchor from turning while screw is put in, Anchor expands and shims the screw  
For use in both hollow walls and concrete, brick, or masonry, Very high ease of use

Anchor Size(inch)	Drill Size(inch)	Plug Length(mm)	Screw Size(mm)
3/16 X 3/4	3/16	19	6-8
3/16 X 7/8	3/16	22	8-10
1/4 X 1	1/4	25	10-12
5/16 X 1-3/8	5/16	35	14-16

## KGF-WA024 Super Plastic Anchors

### Applications:

Super Plastic Anchors can be widely used in various decoration occasions, such as fastening air conditioners, water heaters and range hoods. It can also fix anti-theft doors and windows, mirrors, photo frames.



### Features:

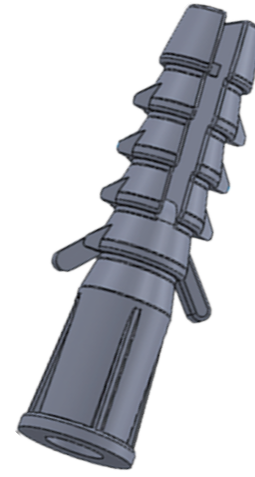
Anchors are made of high-quality plastic, rust proof and corrosion resistant.  
Highly robust carbon steel screws are durable and stable.

Size(mm)
6X30
8X37

## KGF-WA025 Super Plastic Anchors

### Applications:

Super Plastic Anchors can be widely used in various decoration occasions, such as fastening air conditioners, water heaters and range hoods. It can also fix anti-theft doors and windows, mirrors, photo frames.



### Features:

Anchors are made of high-quality plastic, rust proof and corrosion resistant. Highly robust carbon steel screws are durable and stable.

#### Size(mm)

7X35

## KGF-WA026 Super Plastic Anchors

### Applications:

Super Plastic Anchors can be widely used in various decoration occasions, such as fastening air conditioners, water heaters and range hoods. It can also fix anti-theft doors and windows, mirrors, photo frames.



### Features:

Anchors are made of high-quality plastic, rust proof and corrosion resistant. Highly robust carbon steel screws are durable and stable.

#### Size(inch)

1/4 X 1-3/16

5/16 X 1-1/4

3/8 X 1-1/2

## KGF-WA027 Super Plastic Anchors

### Applications:

Super Plastic Anchors can be widely used in various decoration occasions, such as fastening air conditioners, water heaters and range hoods. It can also fix anti-theft doors and windows, mirrors, photo frames.

### Features:

Anchors are made of high-quality plastic, rust proof and corrosion resistant. Highly robust carbon steel screws are durable and stable.



### Size(mm)

8X36

## KGF-WA028 Expansion Wall Plugs

### Applications:

Expansion Wall Plugs is designed to offer the maximum holding power in drywall material. Its fine centered point helps guide the anchor into the wall with flawless precision.



### Features:

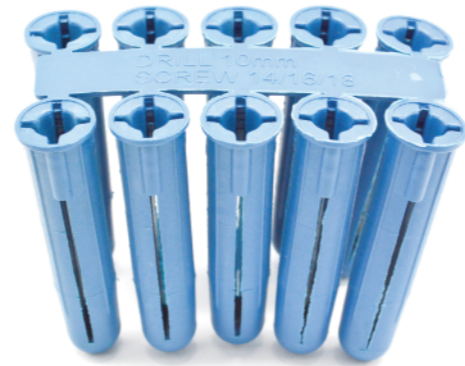
For fixing of light weight loads  
Reusable Strong Case  
Premium Quality Materials

Anchor Size(inch)	Color	Plug Length(mm)
6X25	brown	3-5
8X30	blue	4-7
8X30	blue	5-7
10X50	green	5-9

## KGF-WA029 Expansion Wall Plugs

**Applications:**

Expansion Wall Plugs is designed to offer the maximum holding power in drywall material. Its fine centered point helps guide the anchor into the wall with flawless precision.



**Features:**

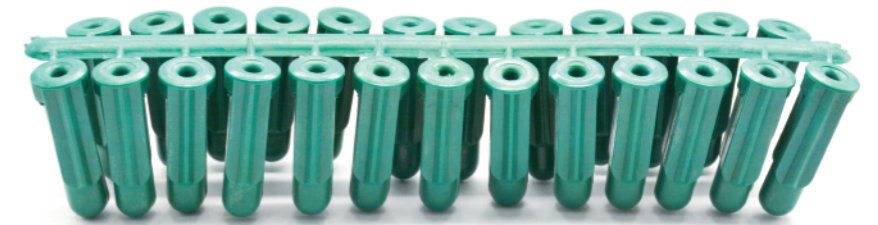
- For fixing of light weight loads
- Reusable Strong Case
- Premium Quality Materials

Anchor Size(inch)	Color
5X22	yellow
5.5X34	red
7X40	brown
10X50	blue
11X55	green

## KGF-WA030 Expansion Wall Plugs

**Applications:**

Expansion Wall Plugs is designed to offer the maximum holding power in drywall material. Its fine centered point helps guide the anchor into the wall with flawless precision.



**Features:**

- For fixing of light weight loads
- Reusable Strong Case
- Premium Quality Materials

Anchor Size(inch)	Color	Plug Length(mm)
6X25	white	22
8X30	green/black	25
10X50	grey	25

## KGF-FA001 Frame Fixings

### Applications:

The Nylon Nail-in drive anchor is a pre-assembled fastening system designed for concrete, masonry block, brick, or natural stone substrates. Its high-performance engineered polymer body integrates either a carbon steel or stainless steel drive nail, providing material compatibility for diverse environmental conditions. The nylon construction ensures corrosion resistance and electrical isolation, while the tapered nail design enables controlled penetration force during installation. This dual-component architecture eliminates on site assembly errors and maintains structural integrity under dynamic loads.



### Features:

- Through fixing
- High load capacities
- Resistant to vibrations

#### Anchor Size(mm)

5x	35	6x	40	8x	60	10x	60	10x	120
	45		60		80		80		135
			80		100		100		140
					120		115		160

#### Screw Size(mm)

3.5x	38	4.15x	45	5.2x	65	6.85x	65	6.85x	125
	55		65		85		85		140
			85		105		105		145
					125		120		165

## KGF-FA002 Frame Fixings

### Applications:

The Nylon Nail-in drive anchor is a pre-assembled fastening system designed for concrete, masonry block, brick, or natural stone substrates. Its high-performance engineered polymer body integrates either a carbon steel or stainless steel drive nail, providing material compatibility for diverse environmental conditions. The nylon construction ensures corrosion resistance and electrical isolation, while the tapered nail design enables controlled penetration force during installation. This dual-component architecture eliminates on site assembly errors and maintains structural integrity under dynamic loads.



### Features:

- Through fixing
- High load capacities
- Resistant to vibrations

#### Anchor Size(mm)

5x	30	6x	40	8x	60	10x	100
	40		60		80		120
	50		80		100		140
					120		160

#### Screw Size(mm)

3.3x	35	3.8x	45	4.8x	65	7x	105
	45		65		85		125
	55		85		105		145
					125		165

## KGF-FA003 Frame Fixings

### Applications:

The Nylon Nail-in drive anchor is a pre-assembled fastening system designed for concrete, masonry block, brick, or natural stone substrates. Its high-performance engineered polymer body integrates either a carbon steel or stainless steel drive nail, providing material compatibility for diverse environmental conditions. The nylon construction ensures corrosion resistance and electrical isolation, while the tapered nail design enables controlled penetration force during installation. This dual-component architecture eliminates on site assembly errors and maintains structural integrity under dynamic loads.



### Features:

- Through fixing
- High load capacities
- Resistant to vibrations

#### Anchor Size(mm)

5x		6x		8x		10x	
	30		40		60		100
	40		60		80		120
	50		80		100		140
					120		160

#### Screw Size(mm)

3.3x		3.8x		4.8x		7x	
	35		45		65		105
	45		65		85		125
	55		85		105		145
					125		165

## KGF-FA004 Frame Fixings

### Applications:

These Hex Nylon Frame Anchors integrate anti-rotation barbs for stability in lightweight applications. Suitable substrates include concrete, stone, solid/hollow brick, solid/hollow block, hollow slab block, and aerated autoclaved concrete (AAC) block.



### Features:

- Featuring anti-rotation barbs to prevent spinning in the hole
- Countersunk sleeve for a flush finish
- Nylon sleeve that reduces thermal bridging (minimizing mould risk) versus metal anchors
- Includes a countersunk screw that pairs with the sleeve for the flush finish.

#### Size(mm)

10X80
10X100
10X120

## KGF-FA005 Frame Fixings

**Applications:**

High-performance nylon frame anchor designed for solid substrates. Features a collared plug for secure installation in hard materials (e.g. steel). Ideal for fixing structural components including door/window frames, garage doors, gates, handrails, satellite dishes, and shelving.



**Features:**

- All-environment use (Interior/Exterior)
- Rapid installation Stainless steel & nylon hybrid build
- Torx (TX) anti-camout drive
- Multi-axis hole tolerance

**Size(mm)**

10X80
10X100
10X120
10X140
10X160

## KGF-FA006 Frame Fixings

**Applications:**

This special designed Frame Anchor is a multi facade/frame anchor that is suitable for fixing of facades, doors, windows, gates, cable trays, metal bracket etc. in concrete, solid brick, hollow brick and aerated concrete.



**Features:**

- Through fixing
- High load capacities
- Resistant to vibrations

## KGF-FA007 Frame Fixings

### Applications:

The DACROMET Frame Anchor is a versatile polyamide fastener featuring a four-zone toothed expansion mechanism, paired with an 8.8 class hex-head screw coated with corrosion-resistant DACROMET and a press washer. Designed for heavy-duty anchoring, it securely installs facade subsystems, ceilings, wood/metal roof structures, door frames, cable trays, kitchen cabinets, and windows into concrete, solid/hollow brick, aerated concrete (foam/gas blocks), and expanded clay concrete substrates.



### Features:

4-Zone toothed expansion adapts securely to diverse substrates (concrete, brick, aerated blocks).  
Corrosion-resistant hex screw (DACROMET-coated 8.8 class) ensures durability.  
High Strength & Versatility supports structural and functional loads (facades, ceilings, fixtures).  
High-grade polyamide plug ensures consistent performance.

#### Size(mm)

10X100
10X120
10X140
10X160
10X180
10X200
10X230
10X260
10X300

## KGF-FA008 Frame Fixings

### Applications:

The Nylon Nail-in drive anchor is a pre-assembled fastening system designed for concrete, masonry block, brick, or natural stone substrates. Its high-performance engineered polymer body integrates either a carbon steel or stainless steel drive nail, providing material compatibility for diverse environmental conditions. The nylon construction ensures corrosion resistance and electrical isolation, while the tapered nail design enables controlled penetration force during installation. This dual-component architecture eliminates on site assembly errors and maintains structural integrity under dynamic loads.



### Features:

Through fixing  
High load capacities  
Resistant to vibrations

#### Anchor Size(mm)

#### Screw Size(mm)

10X80	6.85X85
-------	---------

**KGF-FA009**  
**Frame Fixings**  
PERFIT PLUG

Features:

1. Expandable head, compatible with standard expansion applications.
2. Knottable middle section, ideal for hollow structures, delivering high strength.
3. Versatile rear end, expandable or dust-discharging, maximizing applicability.
4. Head compatible with CSK, TROX, and FLANGED.
5. Reinforced rib design for enhanced stability during installation.
6. Crafted from high-grade virgin nylon material.
7. Symmetrical aesthetic design, inspired by the Great Wall and the Forbidden City.



**Size(mm)**

10X100
10X120
10X140
10X160
10X180
10X200
10X230
10X260
10X300

**KGF-HF001**  
**Hammer Fixings**

Applications:

Hammer Drive Anchor is a fast, easy-to-use expansion anchor made of special zinc alloy. The nailing design eliminates the necessity for hole-spotting, develops substantial holding power, makes the bottom of anchor expanded and the fixture tightly locked in place.

Features:

- Corrosion Resistance
- Load-Bearing Capacity
- Compatibility with Materials



**Anchor Size(mm)**

**Screw Size(mm)**

6X40	3.8X43
6X60	3.8X63
6X80	3.8X83

## KGF-HF002 CSK Hammer Fixings

### Applications:

Hammer Drive Anchor is a fast, easy-to-use expansion anchor made of special zinc alloy. The nailing design eliminates the necessity for hole-spotting, develops substantial holding power, makes the bottom of anchor expanded and the fixture tightly locked in place.

### Features:

- Corrosion Resistance
- Load-Bearing Capacity
- Compatibility with Materials



### Anchor Size(mm)

						80
	25	30	55			100
	30	35	60	40	100	100
<b>5x</b>	35	<b>6x</b> 40	<b>6x</b> 70	<b>8x</b> 45	<b>8x</b> 120	120
	40					135
	40	45	80	80	140	140
	50	50	100			160

### Screw Size(mm)

						83
	28	63	53			103
	33	38	63	43	103	103
<b>3.5x</b>	38	<b>3.8x</b> 43	<b>3.8x</b> 73	<b>4.8x</b> 48	<b>4.8x</b> 123	123
	43					138
	43	53	83	83	143	143
	53	53	103			163

## KGF-HF003 Hammer Fixings

### Applications:

Hammer Drive Anchor is a fast, easy-to-use expansion anchor made of special zinc alloy. The nailing design eliminates the necessity for hole-spotting, develops substantial holding power, makes the bottom of anchor expanded and the fixture tightly locked in place.

### Features:

- Corrosion Resistance
- Load-Bearing Capacity
- Compatibility with Materials



### Anchor Size(mm)

						60
	25					80
<b>5x</b>	30	<b>6x</b> 35	<b>6x</b> 60	<b>8x</b> 40	<b>8x</b> 100	100
	35					120
	50	50	80			140

### Screw Size(mm)

						63
	28					83
<b>3.5x</b>	38	<b>3.8x</b> 38	<b>3.8x</b> 63	<b>4.8x</b> 43	<b>4.8x</b> 103	103
	38					123
	53	53	83			143

## KGF-HF004 Mushroom Hammer Fixings

### Applications:

Mushroom Hammer Fixings is a removable light duty, impact/rotation setting, interference fit anchor, with a variety of head styles, designed for use in a variety of substrates such as concrete, stone, solid brick, solid block, grout filled block and hollow block.

### Features:

The drive screw's saw tooth thread makes it easy to drive and unscrew  
Requires only small diameter holes for discreet fixing



Anchor Size(mm)	Screw Size(mm)
6X38	4X40

## KGF-HF005 Special Hammer Fixings

### Applications:

Hammer drive anchor is a fast,easy-to-use expansion anchor made of special zinc alloy.The nailing design eliminates the necessity for hole-spotting,develops substantial holding power.makes the bottom of anchor expanded and the fixture tightly locked in place.The test values listed were obtained using 200-250kgs/sq.cm concrete(no aggre-gate)safe working load should not exceed 25% of stated values.

### Features:

Fast and easy fixing - can be removed  
Countersinks itself when nail is hammered in  
Useable in aerated concrete  
Through fixing



Anchor Size(mm)	Screw Size(mm)
6X38	4.0X40
6X30	3.8X32

## KGF-HF006 Special Hammer Fixings

### Applications:

Hammer drive anchor is a fast,easy-to-use expansion anchor made of special zinc alloy.The nailing design eliminates the necessity for hole-spotting,develops substantial holding power.makes the bottom of anchor expanded and the fixture tightly locked in place.The test values listed were obtained using 200-250kgs/sq.cm concrete(no aggre-gate)safe working load should not exceed 25% of stated values.



### Features:

- Fast and easy fixing - can be removed
- Countersinks itself when nail is hammered in
- Useable in aerated concrete
- Through fixing

Anchor Size(mm)	Screw Size(mm)
5X25	3.5X26
6X35	4X40

## KGF-HF007 Special Hammer Fixings

### Applications:

Special Hammer Fixings is a removable light duty, impact/rotation setting, interference fit anchor, with a variety of head styles, designed for use in a variety of substrates such as concrete, stone, solid brick, solid block, grout filled block and hollow block.



### Features:

- A wide, flat collar with collapsable sleeve design, ensures tight fixing
- Nylon body provides insulation between drive screw and work surface

Anchor Size(mm)	Screw Size(mm)
5X33	3.5X38
6X47	4X50
6X57	4X60
6X70	4X75
8X55	4.5X58
8X75	4.5X78
8X101	4.5X105

## KGF-HF008 Special Hammer Fixings

### Applications:

Special Hammer Fixings is a removable light duty, impact/rotation setting, interference fit anchor, with a variety of head styles, designed for use in a variety of substrates such as concrete, stone, solid brick, solid block, grout filled block and hollow block.

### Features:

A wide, flat collar with collapsable sleeve design, ensures tight fixing  
Nylon body provides insulation between drive screw and work surface



Anchor Size(mm)	Screw Size(mm)
6X35	3.8X38

## KGF-HF009 Nail in Anchors

### Applications:

A steel/nylon style anchor that is set by hammer impact, thus sliding the pin down the stem creating an expansive force against the wall of the substrate. Ideal for mechanical service trades using suspending straps, various hanger systems, and through fixings. Nylon body provides insulation between screw and work surface.

### Features:

The drive screw's saw tooth thread makes it easy to drive and unscrew  
Requires only small diameter holes for discreet fixing



Anchor Size(mm)	Screw Size(mm)
5X20	3X23
5X25	3X28
5X30	3X33
5X38	3X40
6X20	3X23
6X25	3X28
6X38	3X40
6X50	3X53
6X75	3X78
6X100	3X103

## KGF-HF010 Lightning Hammer Fixings

### Applications:

Lightning Hammer Fixings are ideal for a wide variety of light load fastening in wood, Hardboard, plaster, metal, cinder block, brick, slate, marble, plastic, tile, glass and concrete. Its unique design allows the nail to expand the anchor uniformly in the hole.

### Features:

Fast and easy fixing - can be removed  
Countersinks itself when nail is hammered in  
Useable in aerated concrete  
Through fixing



### Anchor Size(mm)

				25
				30
<b>5x</b>				35
	<b>6x</b>			40
			<b>6x</b>	50
				60
				70
				80
			<b>8x</b>	80
				100
				100
				120
				45
				60

### Screw Size(mm)

				28
				33
<b>3.5x</b>				40
				45
	<b>3.8x</b>			55
				65
			<b>3.8x</b>	75
				85
				105
			<b>4.8x</b>	85
				105
				125

## KGF-HF011 Hammer Fixings

### Applications:

For fixing of skirting, brackets, laths, frames and battens etc. in solid brick and concrete

### Features:

Fast and easy fixing - can be removed  
Countersinks itself when nail is hammered in  
Useable in aerated concrete  
Through fixing



### Anchor Size(mm)

### Screw Size(mm)

6X40	3.8X43
6X60	3.8X63
6X80	3.8X83

## KGF-HF012 Ceiling Anchors

### Applications:

Ceiling Anchors is for fixing of suspended ceilings, ventilation systems, claddings, brackets and sheet metal in concrete

### Features:

Load capacities are valid for cracked and non-cracked concrete  
Fast and easy throughfixing  
Small drill diameter  
Suitable for suspended ceilings etc.



#### Anchor Size(mm)

6X40
6X60

## KGF-HF013 Drive Nail Anchors

### Applications:

An all metal wedge style anchor that sets by hammer impact, thus sliding the pin down the stem creating an expansive force against the wall of the hole. Ideal for mechanical trades using suspending strap, various hanger systems, and through fixings.

### Features:

Hammer-in method makes installation quick and easy  
Full expansion of the anchor is evident when the head of the expansion nail sits flush with the flange  
The anchor's large flange prevents pullout



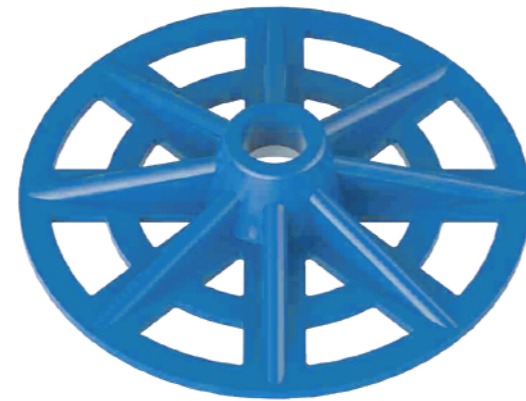
#### Anchor Size(inch)

1/4 X 3/4
1/4 X 1
1/4 X 1-1/4
1/4 X 1-1/2
1/4 X 2
1/4 X 2-1/2
1/4 X 3
1/4 X 4

## KGF-IF001 Nylon Render Washer

**Applications:**

Position washer and install fasteners evenly across wall. To avoid distortion of the product or substrate around the washer, do not over tighten. Washers are used with 10 gauge countersunk screws of various lengths.



**Features:**

- Lightweight and easy to install
- Raised face and 8 reinforcing ribs to prevent spinning during installation
- Large outside diameter for contact with panels

Anchor Size(mm)	Color
42	white/blue
45	white/blue

## KGF-IF002 Plastic Insulation Fixings

**Applications:**

Its wide nail cap can evenly disperse the pressure, avoiding localized pressure damage to the insulation material. This design detail ensures the integrity of the insulation layer, but also helps to improve the stability and durability of the entire insulation structure.



**Features:**

- Convenient and efficient characteristics
- Fast and easy throughfixing

Anchor Size(mm)
6X30
6X40
6X50
6X60
6X70
6X80
6X90

## KGF-IF003 Plastic Insulation Fixings

### Applications:

Insulation nail is a special engineering plastic expansion nail which fixes the insulation board on the wall. Insulation nail is a special anchor for external wall insulation, which is widely used in building decoration and anchorage of wall insulation house. It consists of galvanized screw, nylon riser and fixed wafer. According to the thickness of insulation layer, it can be divided into many specifications.



### Features:

convenient and efficient characteristics  
Fast and easy throughfixing

#### Anchor Size(mm)

10X70
10X80
10X90
10X100
10X110
10X120
10X140
10X160
10X180
10X200
10X220

## KGF-IF004 Plastic Insulation Fixings

### Applications:

Keeps soft and hard insulation in position on concrete, solid brick, sand lime brick and aerated concrete



### Features:

No thermal bridge  
All lengths available with plastic disc

#### Anchor Size(mm)

10X70
10X80
10X90
10X100
10X110
10X120
10X140
10X160

## KGF-IF005 Plastic Insulation Fixings

### Applications:

Professional-grade insulation nail, fully considered the diverse needs of different construction scenarios, specially is designed to launch the power of the adjustable function. This thoughtful design makes the construction personnel in the face of different materials of the wall, can flexibly adjust the firing force of the nail, to ensure that each nail can be properly embedded in the wall, not only to ensure the anchoring effect, but also to avoid damage to the wall due to the firing force is too large.



### Features:

convenient and efficient characteristics  
Fast and easy throughfixing

#### Anchor Size(mm)

9X50

9X85